



Positioning by MobiCall

Accurate positioning made easy



Indoor positioning



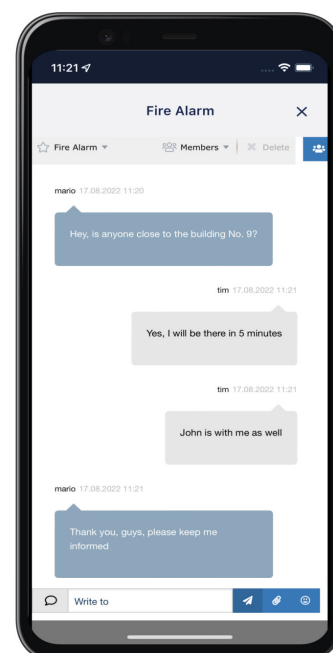
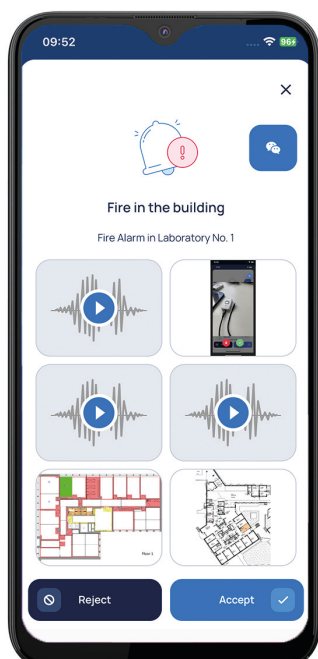
What is Indoor Positioning?



Indoor positioning is the process of locating people or assets within a building. It is used in various settings like warehouses, hospitals, and emergency situations. New Voice's indoor beacons have a capacity of 4800mAh, ensuring extended operation and dependable performance.

How does Indoor Positioning work?

Indoor positioning systems use GPS, WiFi, Bluetooth, DECT, NFC tags and RFID to locate indoors. Fixed beacons transmit signals that are read by the devices and provide accurate positioning using a location engine. New Voice provides highly accurate positioning for indoor map navigation, asset tracking and indoor space security.





Outdoor positioning



What is Outdoor Positioning?



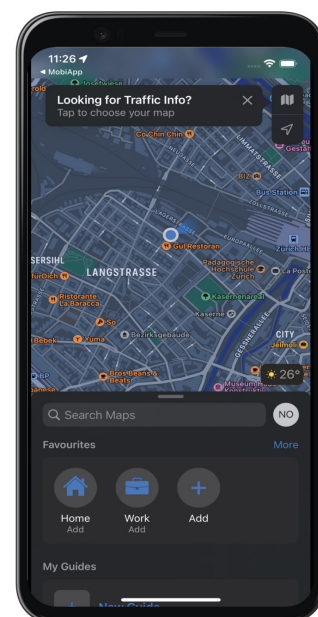
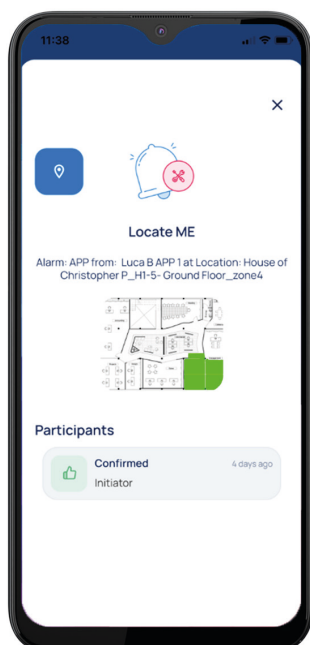
Outdoor positioning uses satellites and/or radio signals, such as specialized BLE beacons for open environments, to accurately determine precise outdoor locations. It enables real-time tracking for businesses and enhances security by quickly locating individuals in hazardous situations.

New Voice's outdoor beacons have a capacity of 7200mAh, specifically designed to meet the higher power requirements in colder outdoor conditions

How does Outdoor Positioning work?

Outdoor positioning relies on various technologies such as Wifi, BLE Beacon, NFC, LTE, GPS, Galileo... It utilizes satellite signals to accurately determine coordinates, facilitating real-time tracking and enabling swift emergency response.

Integrating it into security systems requires technical implementation, while the use of Outdoor BLE beacons allows for higher accuracy within limited areas.





Applications



Nurse Call Systems

The Positioning System helps nurses and hospitals with workflow, safety, tracking, prevention, optimization, and tracing.



Silent alarm

It enhances silent alarms by providing precise location information for faster and targeted response.



Lone worker protection

It enhances lone worker protection through real-time location monitoring for immediate assistance and ensuring safety.



Emergency Services

It helps emergency services with location data, faster response, and improved emergency management.



Assisted Living

It helps assisted living with real-time monitoring, safety enhancement, emergency response, and efficient staff coordination for improved care.



Hospitality

It enhances hospitality by offering personalized experiences, efficient navigation, streamlined operations, and improved guest services.





Why do you need a positioning system?



Improved safety and security of your staff

A Positioning System ensures real-time tracking of individuals for safety and efficient emergency response.

Increased efficiency

A Positioning System streamlines workflows by swiftly and efficiently locating employees, patients, or assets, optimizing operations.



Better customer service

A Positioning System enhances customer service by guiding retail customers directly to desired products.

Enhanced security

A Positioning System enhances premises security by tracking movements of patients and staff, enabling rapid response from security and emergency teams.



Reduced costs

A Positioning System reduces costs by tracking inventory and optimizing staffing levels, while offering flexibility to adapt and expand the system according to future needs.





Advantages



Why do customers choose our positioning application?

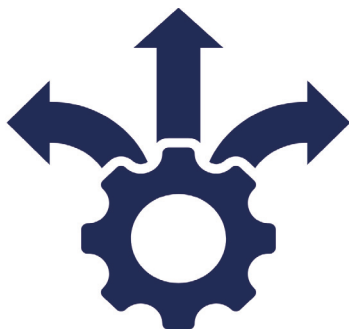


Security

- Secure and timely alerting
- Employee protection
- Video and chat support
- All data stays in the company

Increased efficiency

- Quality assurance
- Faster information flow
- Workflow optimisation
- Damage minimisation



Flexibility

- Expansion of functions in the future
- Investment security thanks to modularity



Our customers are satisfied!

"It must be possible to raise the alarm easily and quickly, because in emergencies there is not much time to think."

Christian Kieliger

Head of Building Technology Safety, Triaplus AG
Integrated Psychiatry Uri, Schwyz and Zug



"New Voice has invested a lot of development work in connection with tracking. We have also worked with New Voice to further develop the system based on our high demands."

Rudi Graser

Head of Hospitality & Infrastructure
Member of the Executive Board at the Swiss Epilepsy
Foundation



Read more at newvoiceinternational.com





Asset Tracking



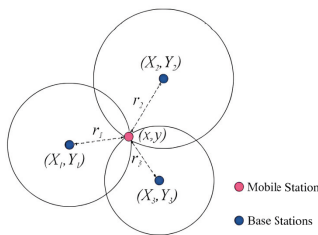
Asset Tracking is a powerful solution that enables real-time tracking of people or equipment. By leveraging localization technologies such as BLE Beacons, GPS, NFC tags, or WiFi, it enhances safety, optimizes operations, and reduces costs.

Benefits of Asset Tracking

Asset tracking provides real-time visibility, improves efficiency, saves costs, enhances security, ensures compliance, and improves customer service. It optimizes asset utilization, prevents loss or theft, meets regulations, and boosts productivity.



Precision through triangulation



Triangulation is used to calculate the precise location in the monitored building or outside. The location is visualised at any time on a smartphone or tablet on the integrated map





AoA - Angle of Arrival



AoA signifies that the location is determined by identifying the direction of signals transmitted by the tracked assets. AoA antennas, serving as BLE scanners, combine both the signal strength and signal direction to ascertain the position. The utilization of special calculation methods by MobiCall allows for fast and precise positioning.

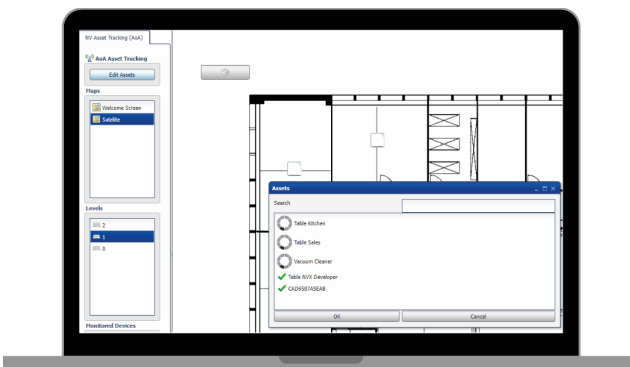
BLE Scanners

BLE scanners can scan all signals from employees and assets. This can help MobiCall to keep track on the personnel and the important assets. This can also be done based on Wi-Fi, depending on the device.

These scanners require a Power over Ethernet (PoE) or power connection and may also require a network connection or wireless connectivity via DECT, Wi-Fi, LoRa, etc. The precision of localization is enhanced by the AoA antennas from New Voice.

Tracking Assets through Signal Analysis

The goal of asset tracking is to monitor and locate objects or individuals equipped with tags or badges that emit radio signals. These signals provide information about the assets' location, enabling tracking and monitoring.



The signals emitted by the assets reach the BLE scanners with slight variations in timestamps at each AoA antenna. By leveraging these timestamps and the known positions of the sensors within the scanner, the angle of the incoming signal can be determined.

By intersecting the lines originating from different scanners, which represent the directions of the assets' signals, the desired location can be identified. This is illustrated by the convergence of black lines at the center of the yellow semitransparent circle.

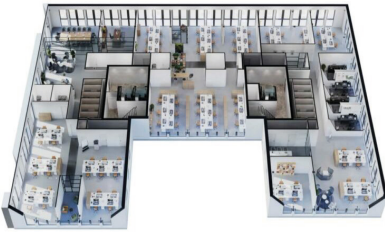




Path Finding



Pathfinding is the process of finding the optimal route between two points in a given environment. It involves analyzing obstacles and constraints to determine the shortest or most efficient path. It is widely used in robotics, video games, logistics, and navigation systems.



Benefits of Path Finding

Pathfinding offers advantages such as efficiency, optimal resource allocation, real-time adaptability, improved safety, enhanced user experience, resource optimization, and cost reduction.

Applications



Clinics



Stadiums



Shopping malls



Museums



Universities



Train stations



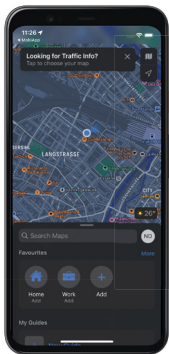


MobiCall.App



MobiCall.App for Positioning

MobiCall.App offers you a simple way to locate an asset or a person like a lone worker in a closed room, warehouse, or factory.



When event is triggered, MobiCall.App automatically sends the actual location of the event or the person who triggered the alarm.

This allows the team to get crucial information about the event and put the most sensible solution plan into action.

Positioning technology



Bluetooth Beacons



WiFi



DECT Transmitter



NFC Tags



GPS



Ble Scanner

MobiCall is compatible with all BLE beacons. New Voice's beacons offer enhanced protocols for more accurate positioning, including room-level accuracy.

These beacons can also provide temperature and humidity information, while tags can transmit air pressure data for further processing.

Supported devices and manufacturer



- Samsung
- Spectralink
- CAT
- Honeywell
- Huawei
- Cross Cell
- Alcatel Lucent
- Quuppa
- Cisco CMS
- Cisco DNA Spaces
- Aurba
- Ekahau
- and many more...



Accurate positioning made easy!

Learn more at www.newvoice.global





Switzerland:

New Voice SA
Chemin du Joran 8B
1260 Nyon
Tel: +41 58 750 11 20

Germany:

New Voice Systems GmbH
Mörikestrasse 17
71636 Ludwigsburg
Tel: +49 2131 266 85 50

France:

New Voice SARL
19 rue Corot
92410 Ville d'Avray
Tel: +33 1 41 15 82 61



mobicall@newvoice.global



www.newvoice.global

